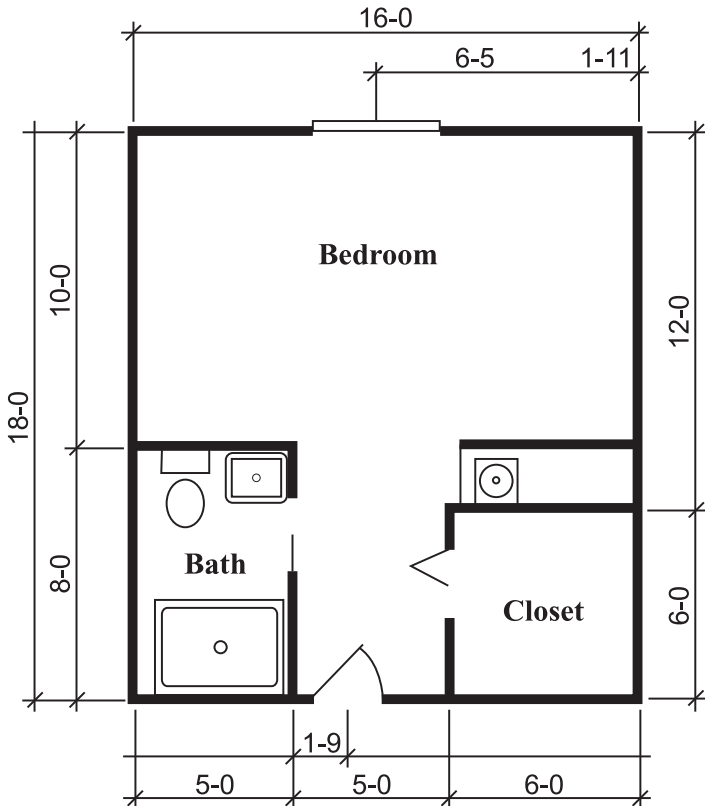
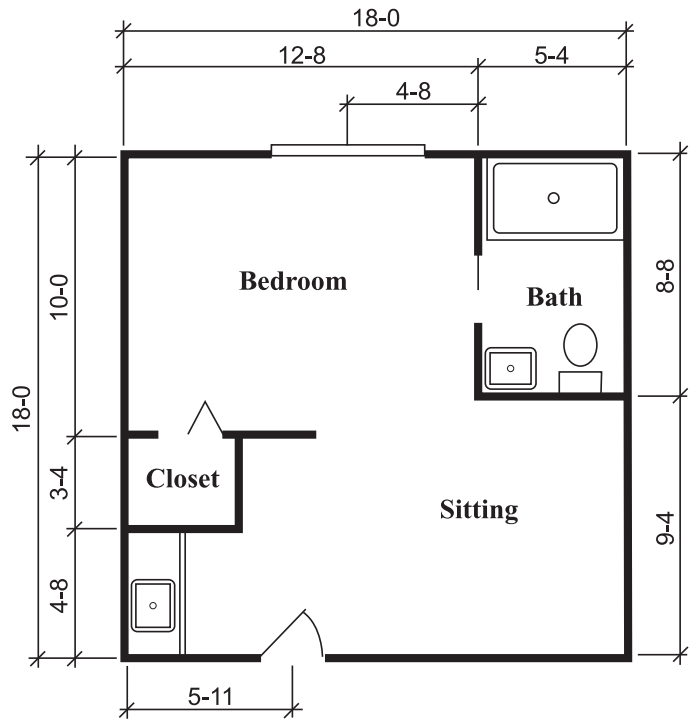


# STERLING HOUSE PORT CHARLOTTE



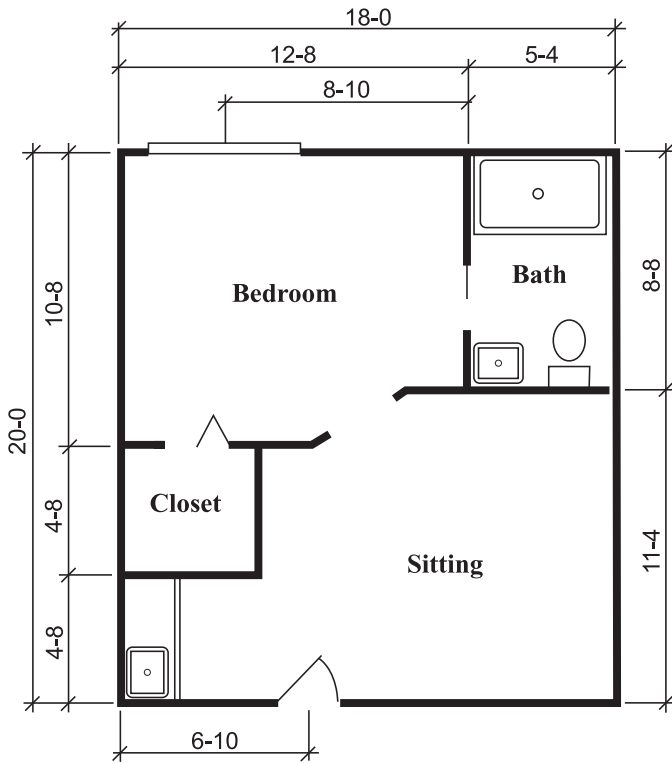
## SILVERDALE SUITE

One Bedroom, One Bath  
288 Square Feet



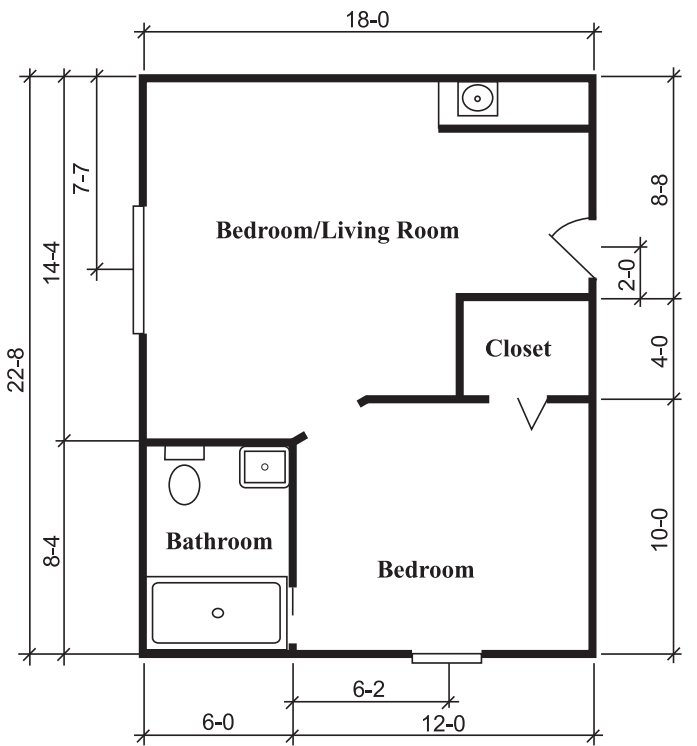
## TOWNSEND SUITE

One Bedroom, One Bath  
324 Square Feet



## RICHMOND SUITE

One Bedroom, One Bath  
360 Square Feet



## HAWTHORNE I SUITE

One Bedroom, One Bath  
410 Square Feet



STERLING HOUSE PORT CHARLOTTE  
18440 Cochran Boulevard  
Port Charlotte, Florida 33948  
**(941) 743-9300**  
Assisted Living Facility # AL9027  
www.brookdaleliving.com

Floor plans may vary based on location. All dimensions are approximate.